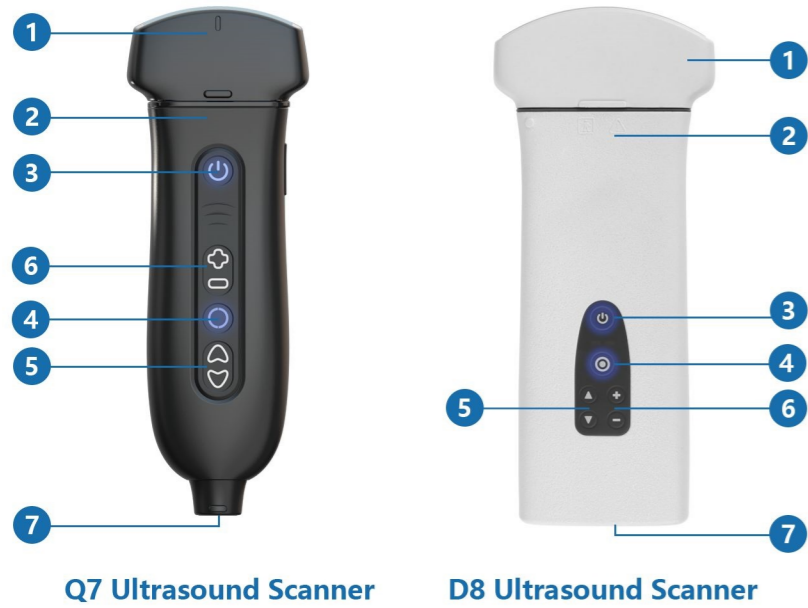


# About Youkey Ultrasound Scanner



Q7 Ultrasound Scanner

D8 Ultrasound Scanner

No.	Name	Description
1	Transducer	Changeable transducer module
2	Main unit	Ultrasound scanning engine, built-in Li-ion battery
3	Power button	Short press, power on or freeze/unfreeze scanner Long press >=3s, power off the scanner. Blue blinking, the scanner is in freezing status. Blue solid, the scanner is in scanning status.
4	Menu button	Set scan mode when in scanning status. Save image when in freezing status. Battery light shows the battery status.
5	Up / Down button	Increase / Decrease Depth or switch parameters.
6	"+" / "-" button	Increase / Decrease Gain and Parameters .
7	USB Type-C	Battery charging or data cable connection.

### Note:

- ① Do not use the scanner when charging.
- ② The scanner should be frozen or powered off when switching transducers.
- ③ The adapter output is DC 5V 2A.

# Using Youkey Ultrasound Scanner

## 1. SonoIQ App Download

Download "SonoIQ" App from the App Store, or Youkey Website.



## 2. Start SonoIQ App

### 3. Turn on/off scanner:

Turn on: Short Press the power button. The scanner is ready when the power light is blinking slowly.

Turn off: Long press the power button for more than 3 seconds.

### 4. Connect scanner:

- a) **Android and Windows:**  
Click on the software - WiFi signal icon to connect the scanner to the smart device.
- iOS:**  
WiFi connecting password is '12345678', toggle off the "Auto Join" after connected.

- b) Install the Windows driver in the installation folder to use Windows USB connection.

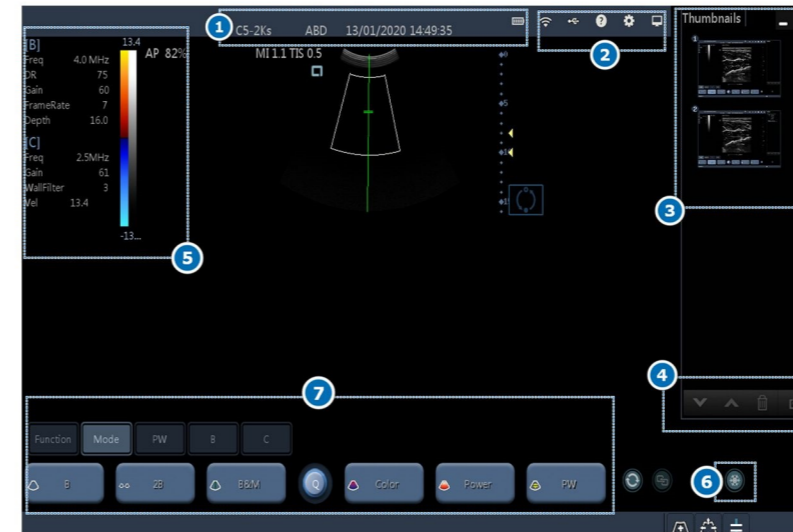
### 5. Scan Screen:

#### (1) Android or iOS



- ① Main Menu, WiFi Signal, Probe Battery, Thumbnail, Patient Info.
- ② Probe Model, Exam Type, Biopsy Guide, Grid, Smart Device Battery, System Time.
- ③ List of Parameters, Gray Scale.
- ④ Functions.
- ⑤ Freeze / UnFreeze, Image Save
- ⑥ Pulsed-Wave Doppler Mode / Update, B / M Mode, Color / Power Doppler Mode.
- ⑦ More Parameters Adjustment.
- ⑧ Depth Adjustment, Gain Adjustment.

#### (2) Windows



- ① Probe Model, Exam Mode, System Time, Scanner Battery.
- ② WiFi Signal, USB Connection, Manuel, System Setting, Task Manager.
- ③ Thumbnails, Minimize / Exit.
- ④ Page Down, Page Up, Delete, Export for Thumbnails.
- ⑤ List of Parameters, Gray Scale.
- ⑥ Freeze / Unfreeze.
- ⑦ Softkeys Control Area

Left click the "Mode" soft key, select Imaging Mode. (PW Mode: Click update icon and get the spectrum).

## 6. Freeze:

Press the button on the App to freeze the scan image

## 7. Measurement:

- a) Freeze the image, then click "Measure" to do the measurements.
- b) Measurements including distance, angle, ellipse, HR, time, etc.
- c) Click "Clear All" to remove all measurements. Drag one measurement to the left to delete it.

## 8. Save image / Cine:

- a) Click the save image icon to save the images. One single frame image will be saved to local storage directory "SonoIQ / Picture" folder.
- b) Click the freeze icon to freeze the image. Then click " Save Cine" icon and select "START NOW" to save the cinema loop file to local storage directory "SonoIQ / Video" folder.

## 9. Review:

- a) Click Thumbnail icon to review the images.
- b) Check at local disk SonoIQ folder or Gallery.
- c) Review saved images and cine-loops through "Info", "Patient list" on the Main screen "Function".

## 10. Share:

- a) Sharing scanned files in the Gallery or SonoIQ folder.
- b) Uploading images to DICOM server.

### Note:

Only one smart device can be connected at one time.

Enable location services to search scanner WiFi signal on Android and iOS devices.

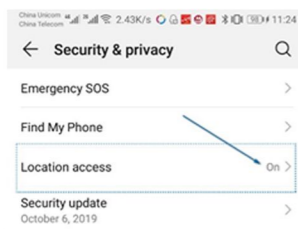


# FAQ

## 1. Scanner Not Connecting to the Smart Device

### a) Enable location services on android and iOS devices

Depending on the smart device, the following steps may be slightly different.



Open your device's **Settings** app.

Tap **Security & privacy**.

If you have a work profile, tap

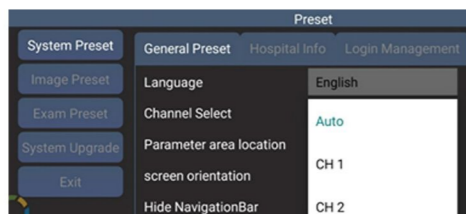
**Advanced**.

Tap **Location access**.

Turn **Access my location** on.

### b) Smart device may not support 5GHz WiFi

Change WiFi Channel to 2.4GHZ( from CH 1 to CH 13) in SonoIQ APP via USB connection on Android device or WiFi connection on other devices which can support 5G WiFi.



## 2. No Scan Image

### For Scanner:

- a) Make sure the transducer parts still stably attached on the scanner

### For Android and iOS Devices

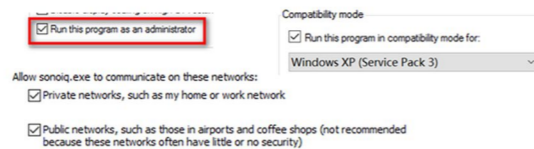
- b) Clear background software, restart SonoIQ APP and the scanner.

### For Windows Devices

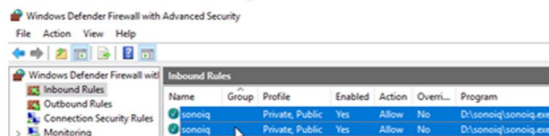
- c) Set run this program as an administrator and in compatibility mode for Windows XP(Service Pack 3) then allow access of "sonoiq.exe" in Windows firewall setting.

**Steps:** Open SonoIQ folder and find "SonoIQ.exe" on your Local Disk  
Right click "SonoIQ.exe" , choose "Properties"

Choose "Compatibility" page, then select "Run this program as an administrator" and "Run this program in compatibility mode for Windows XP(Service Pack 3)" , click "Apply" first, then click "OK"



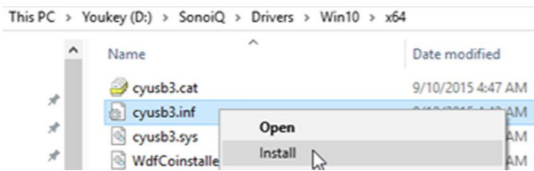
Search the "firewall" and enter the "Advanced setting" , check the "Inbound Rules" of "sonoiq" . Make sure all the connection is enabled.



## 3. Install Scanner USB Driver on Windows Devices

- d) Install the Windows USB driver in SonoIQ installation folder for USB connection.

- e) The straight USB type-C connector should be connected to the main unit using USB connection.



## 4. Shortcut Key on Windows:

- Left Click: Select / Confirm
- Right Click: Freeze / Unfreeze image
- F1/F2, Scroll Up/Down: Change Gain / Show TGC / Select Frame
- F8, Middle Mouse button: Release Cursor
- F10: Quick Save Image
- F11: Change Zoom Mode

## 5. Disinfection

Turn off the scanner before disinfecting, keep the transducer head firmly connected to the main unit.

### Conventional probe in contact with body surface:

Cleaning with a disinfectant containing hydrogen peroxide is recommended.

### Transvaginal probe:

It is recommended to wipe with a disinfectant containing glutaraldehyde or hydrogen peroxide.

### Note:

**Prohibit the use of quaternary ammonium salt disinfectants which can easily lead to plastic shell damage.**

## 6. Further information

**Please Visit Youkey website [www.youkeymedical.com](http://www.youkeymedical.com) and find more information at Services column.**

# Youkey



## Quick Start Guide



WuHan Youkey Bio-Medical Electronics Co., Ltd.



ADD : 2nd Floor, Dingxin Industry park, Jiayuan Road, East Lake Development District, Wuhan 430074, China

Tel : +86 27 87797167

Web : [www.youkeymedical.com](http://www.youkeymedical.com)

Email: [info@youkeymedical.com](mailto:info@youkeymedical.com)

## Mobile Imaging Intelligent Medical

WuHan Youkey Bio-Medical Electronics Co., Ltd.